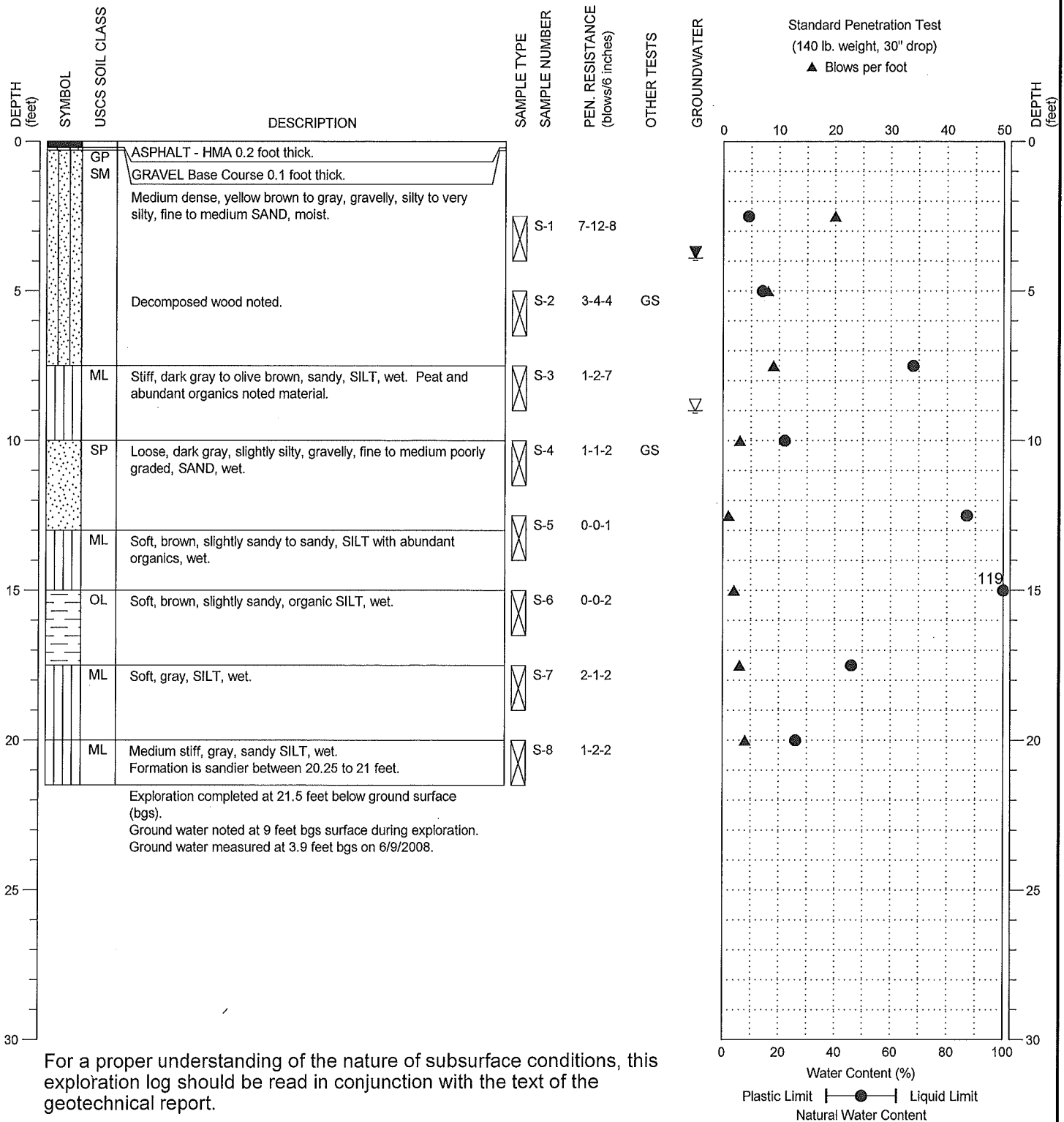


DRILLING COMPANY: Holocene Drilling  
 DRILLING METHOD: Hollow-Stem Auger, Mobile B-61 truck rig  
 SAMPLING METHOD: SPT with Autohammer  
 SURFACE ELEVATION: 33.00 ± feet

LOCATION: STA 24+90 35' RT  
 DATE STARTED: 6/2/2008  
 DATE COMPLETED: 6/2/2008  
 LOGGED BY: J. Speck



DRILLING COMPANY: Cascade Drilling, Inc.

DRILLING METHOD: Hollow Stem Auger, track-mounted, Modified CME-55

SAMPLING METHOD: SPT w/wire-line and down-hole hammer

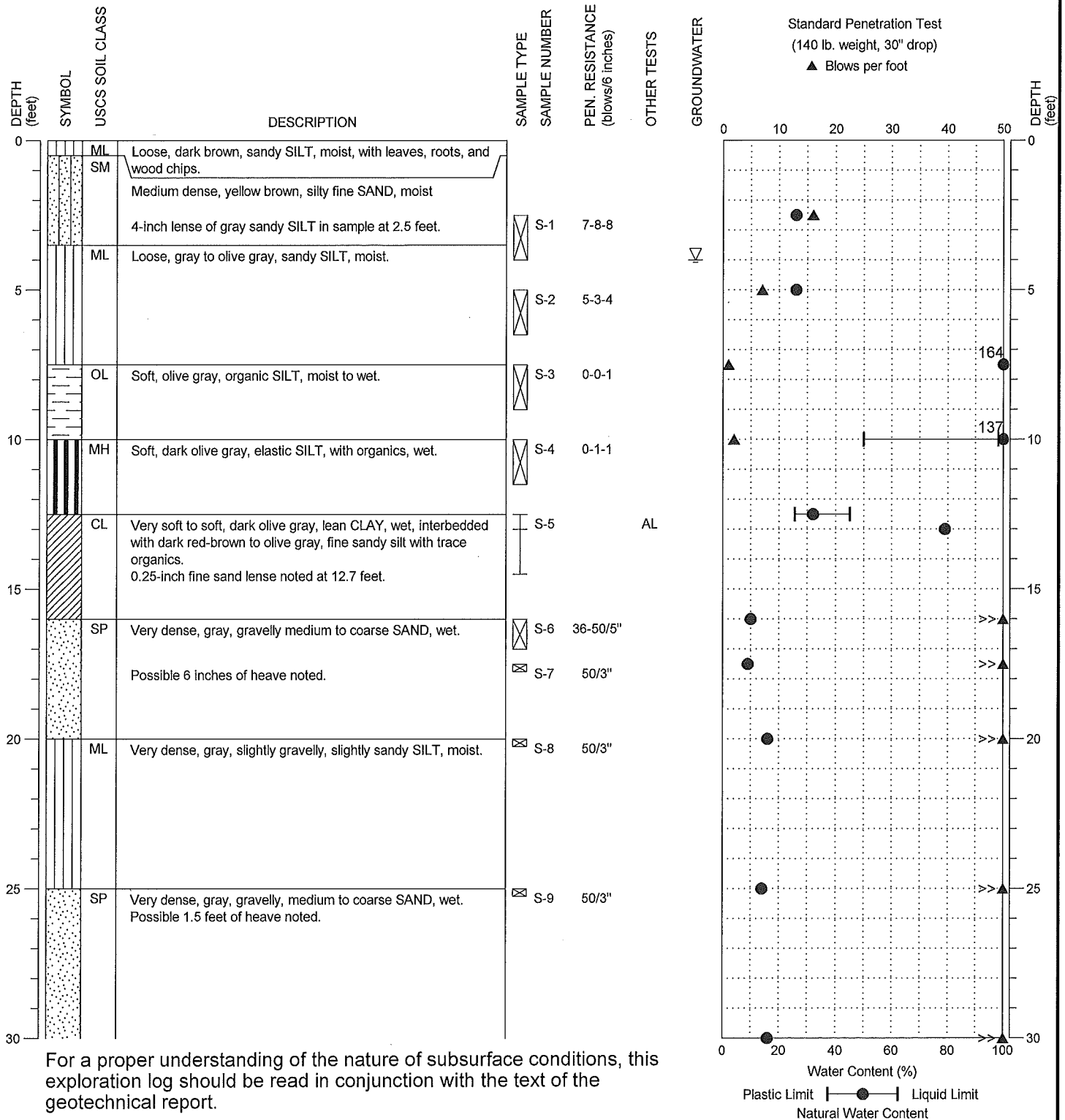
SURFACE ELEVATION: 26.00 ± feet

LOCATION: STA 26+40 50' RT

DATE STARTED: 6/23/2008

DATE COMPLETED: 6/23/2008

LOGGED BY: J. Speck



DRILLING COMPANY: Cascade Drilling, Inc.

DRILLING METHOD: Hollow Stem Auger, track-mounted, Modified CME-55

SAMPLING METHOD: SPT w/wire-line and down-hole hammer

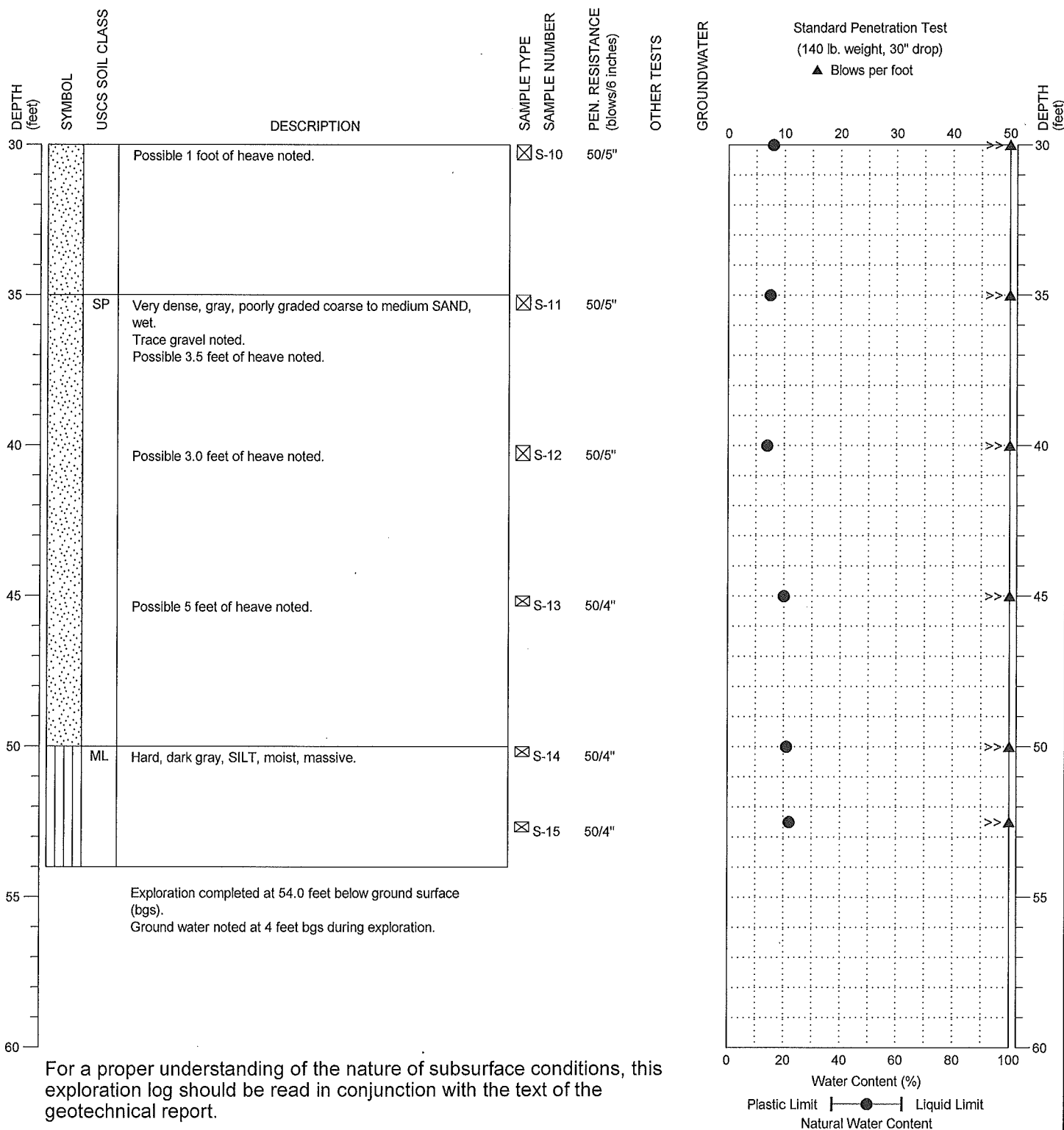
SURFACE ELEVATION: 26.00 ± feet

LOCATION: STA 26+40 50' RT

DATE STARTED: 6/23/2008

DATE COMPLETED: 6/23/2008

LOGGED BY: J. Speck



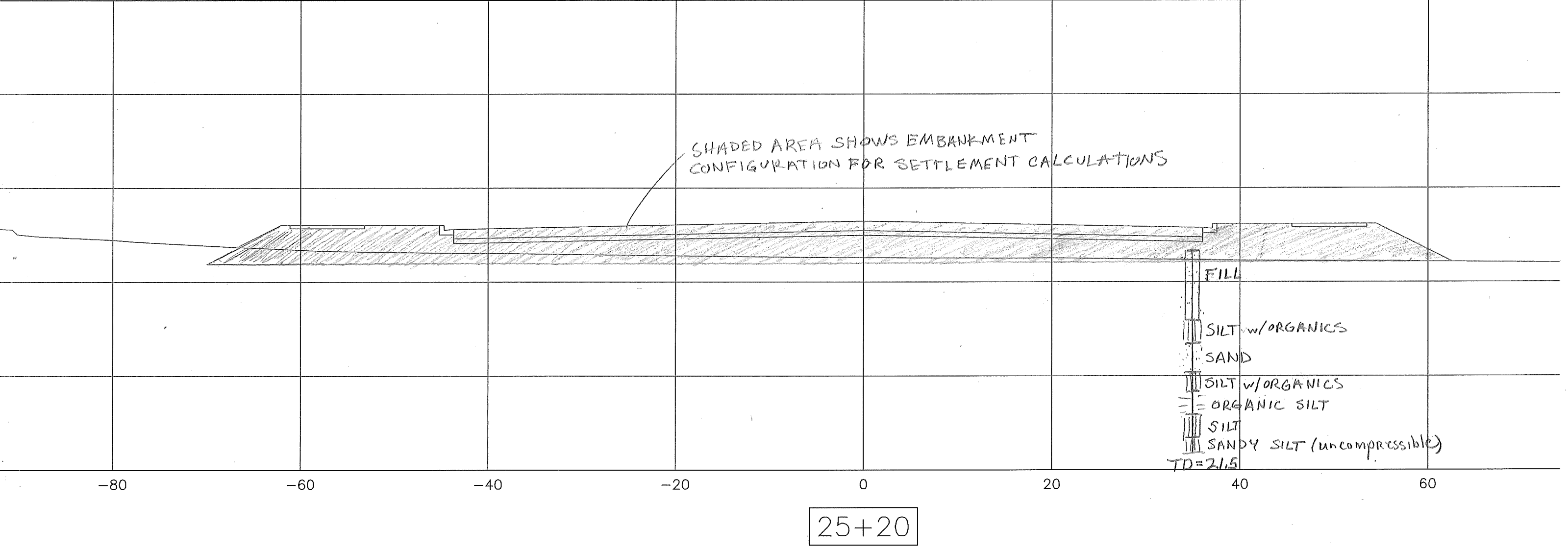


FIGURE 11

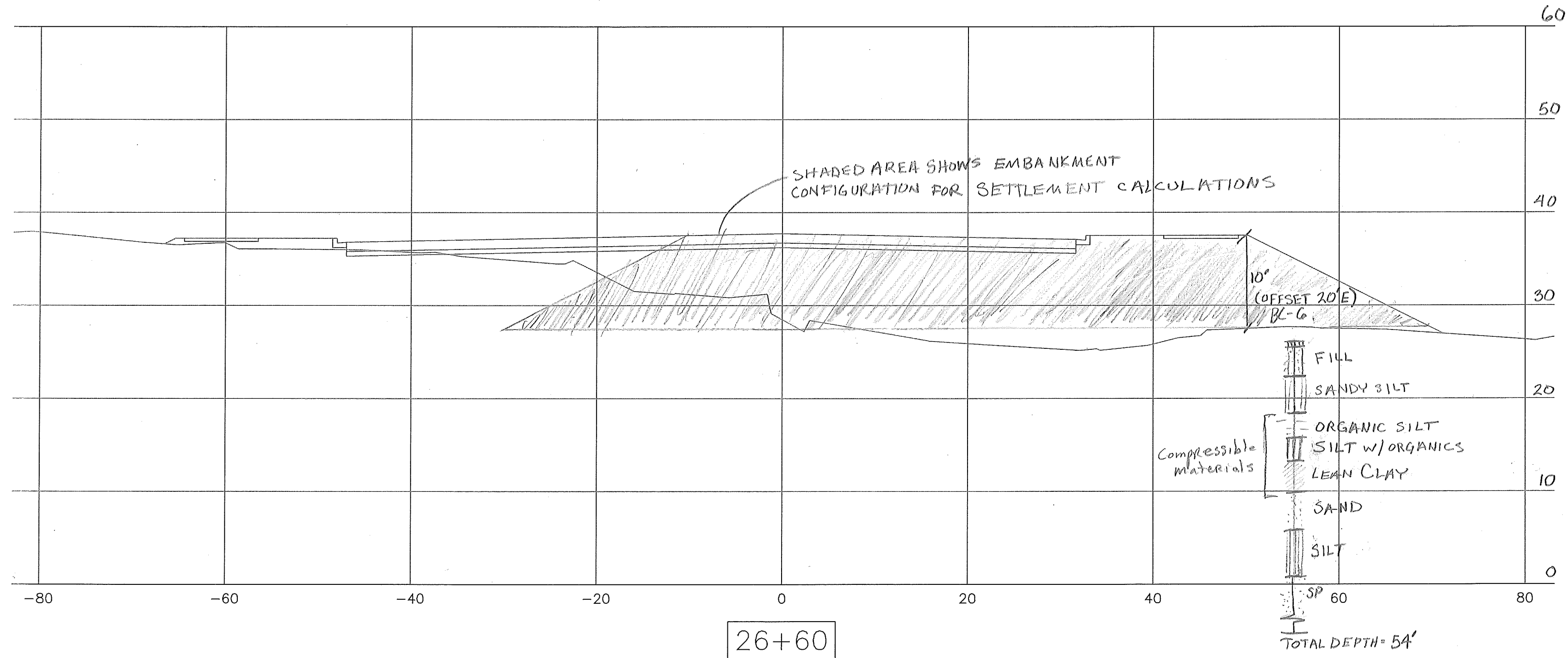
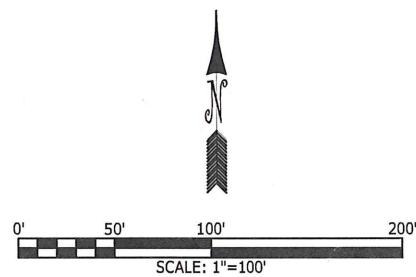


FIGURE 12

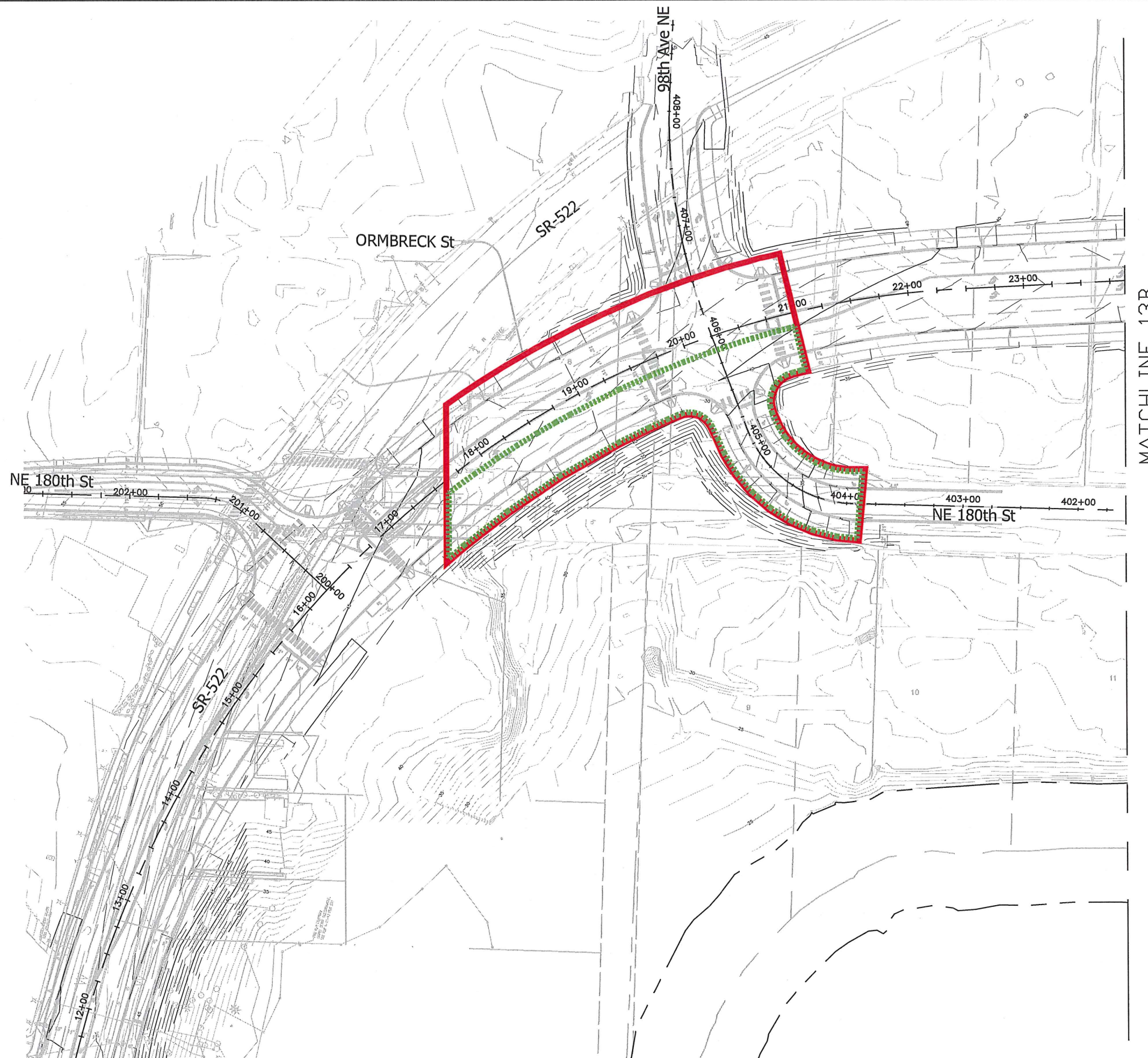




RECOMMENDED EXTENTS  
OF CREST  
OF PRELOAD AREA



RECOMMENDED EXTENTS  
OF VERTICAL DRAINS  
(OPTIONAL)



HWAGEOSCIENCES INC.

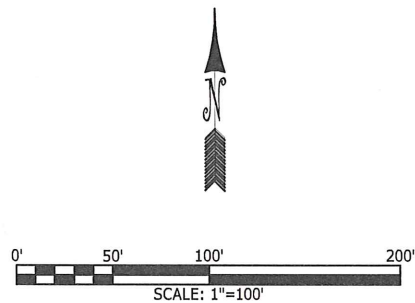
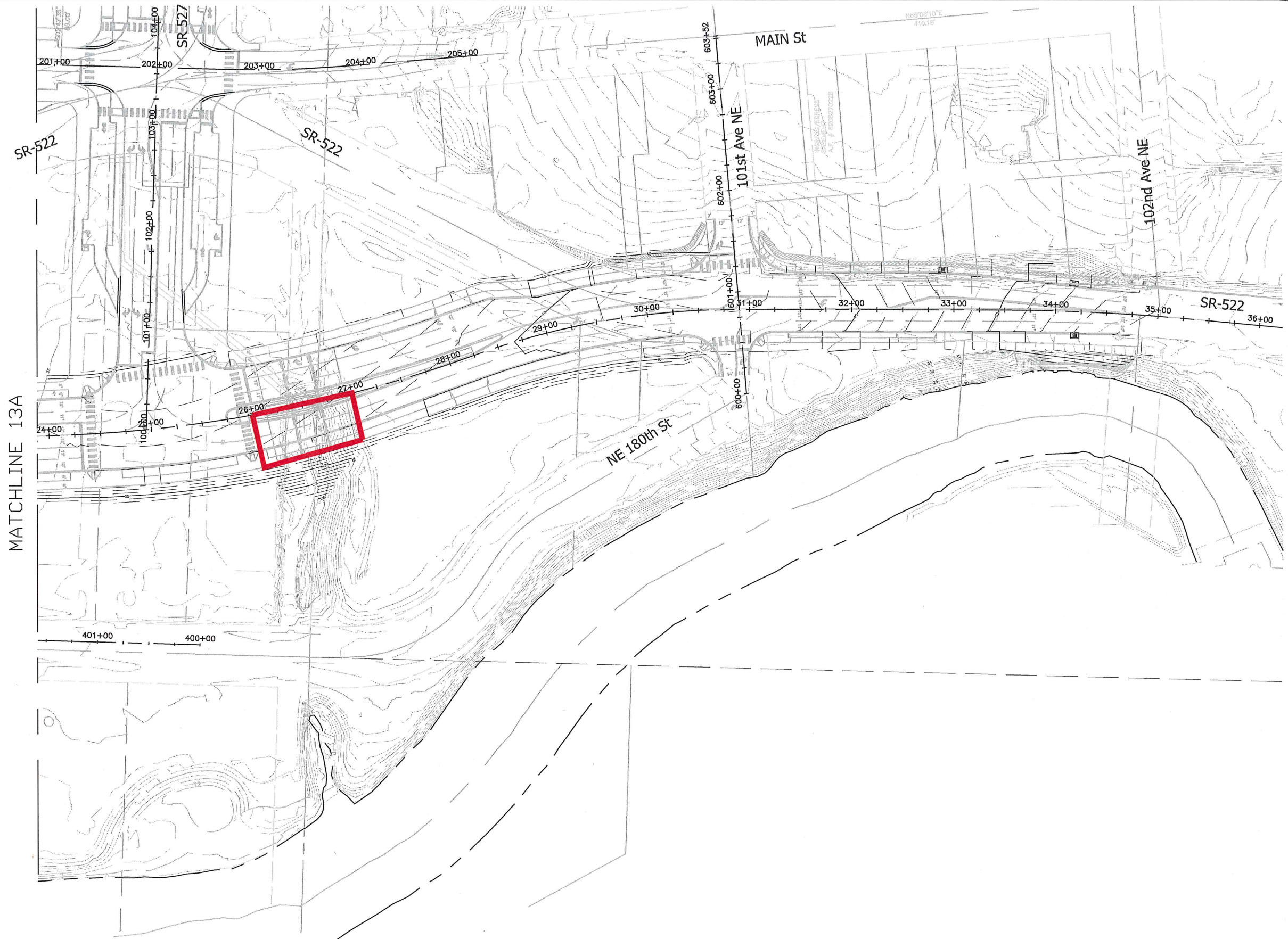
SR 522 PRELOAD RECOMMENDATIONS  
BOTHELL CROSSROADS PROJECT  
BOTHELL, WASHINGTON

RECOMMENDED  
EXTENTS OF PRELOAD  
AND VERTICAL DRAINS

DRAWN BY EFK  
CHECK BY JG  
DATE  
07.20.09

FIGURE NO.  
**13A**  
PROJECT NO.  
2007-098-22  
TASK 500





RECOMMENDED EXTENTS  
OF CREST  
OF PRELOAD AREA



HWAGEOSCIENCES INC.

SR 522 PRELOAD RECOMMENDATIONS  
BOTHELL CROSSROADS PROJECT  
BOTHELL, WASHINGTON

RECOMMENDED  
EXTENTS OF PRELOAD  
AND VERTICAL DRAINS

DRAWN BY EFK  
CHECK BY JG  
DATE  
07.20.09

FIGURE NO.  
**13B**  
PROJECT NO.  
2007-098-22  
TASK 500